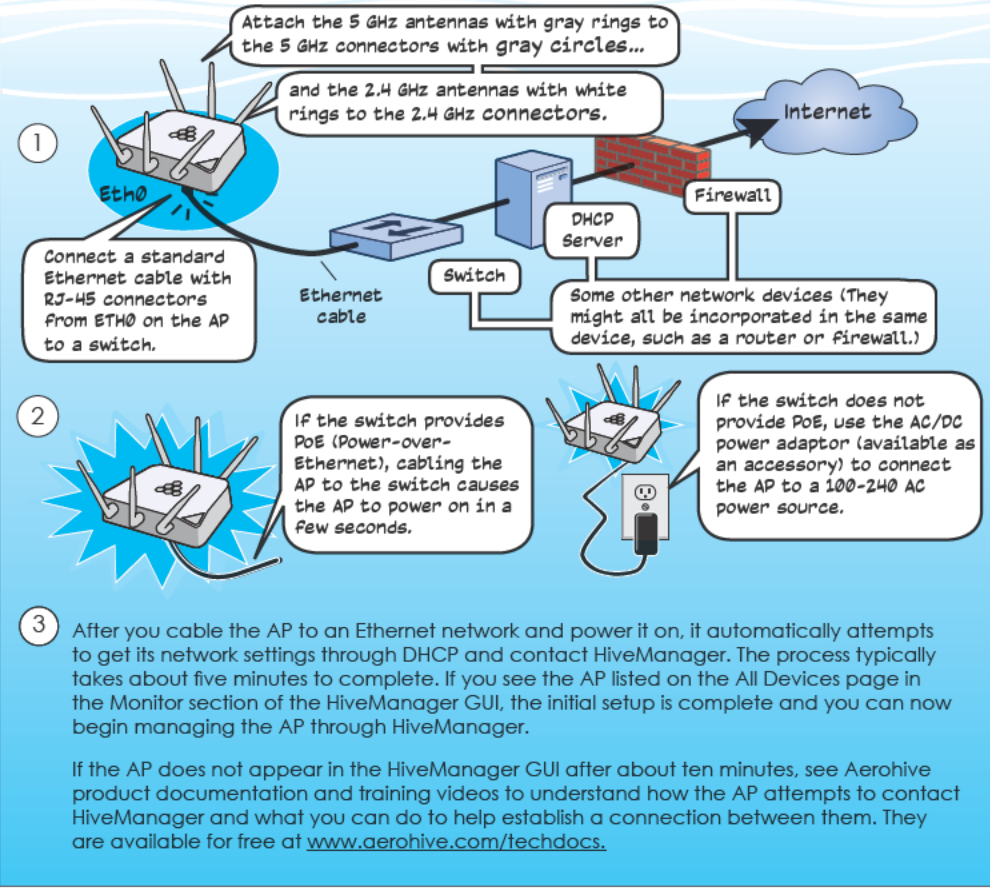


# Aerohive QuickStart for the AP330 and AP350

This guide explains how to set up an Aerohive AP330 or AP350 Access Point so it can make a network connection to HiveManager, and how to mount it on a ceiling or wall. (The AP350 with articulated antennas is shown in the following illustration, but the instructions apply equally to the AP330 and to the AP350 with non-articulated antennas.) To register, get the latest product documentation (including translations of select documents), see compliance information, and download software updates, visit [www.aerohive.com/support](http://www.aerohive.com/support).



## Status LED

The status LED in the corner of the AP330 and AP350 indicates various states of activity through its color and illumination patterns (solid or flashing). The meanings of the colors are explained below.

- Dark:** There is no power or the status indicator is disabled.
- Blue:** (solid) The device is booting up or there is no backhaul link; (flashing) the device is shutting down
- Green:** The default route is through the backhaul Ethernet interface, but not all conditions for normal operations (white) have been met.
- Yellow:** The default route is through a backhaul wifi interface, but not all conditions for normal operations (white) have been met.
- White:** The device is powered on and the firmware is operating normally; that is, a wireless interface in access mode is up, a wired or wireless backhaul link is up, and the AP has a CAPWAP connection to HiveManager.
- Purple:** A new image is being loaded from HiveManager.
- Orange:** An alarm indicating a firmware or hardware issue has occurred.

You can adjust its brightness level from bright (the default) to soft to dim, or turn it off completely. In HiveManager, the setting is on the Management Options page in the Configuration section. CLI: [ no ] system led brightness { soft | dim | off }.

Bright    Soft    Dim    Off



# Mounting the AP330 and AP350

You can mount the AP330 or AP350 to the tracks of a dropped ceiling grid using the rail mount, or to any flat surface that can support its weight using the mounting plate. (AP330: 1.5 lb or 0.68 kg; AP350: 2.375 lb or 1.08 kg). Both options are explained below. (The AP330 is shown in these illustrations, but the instructions apply to both models.)

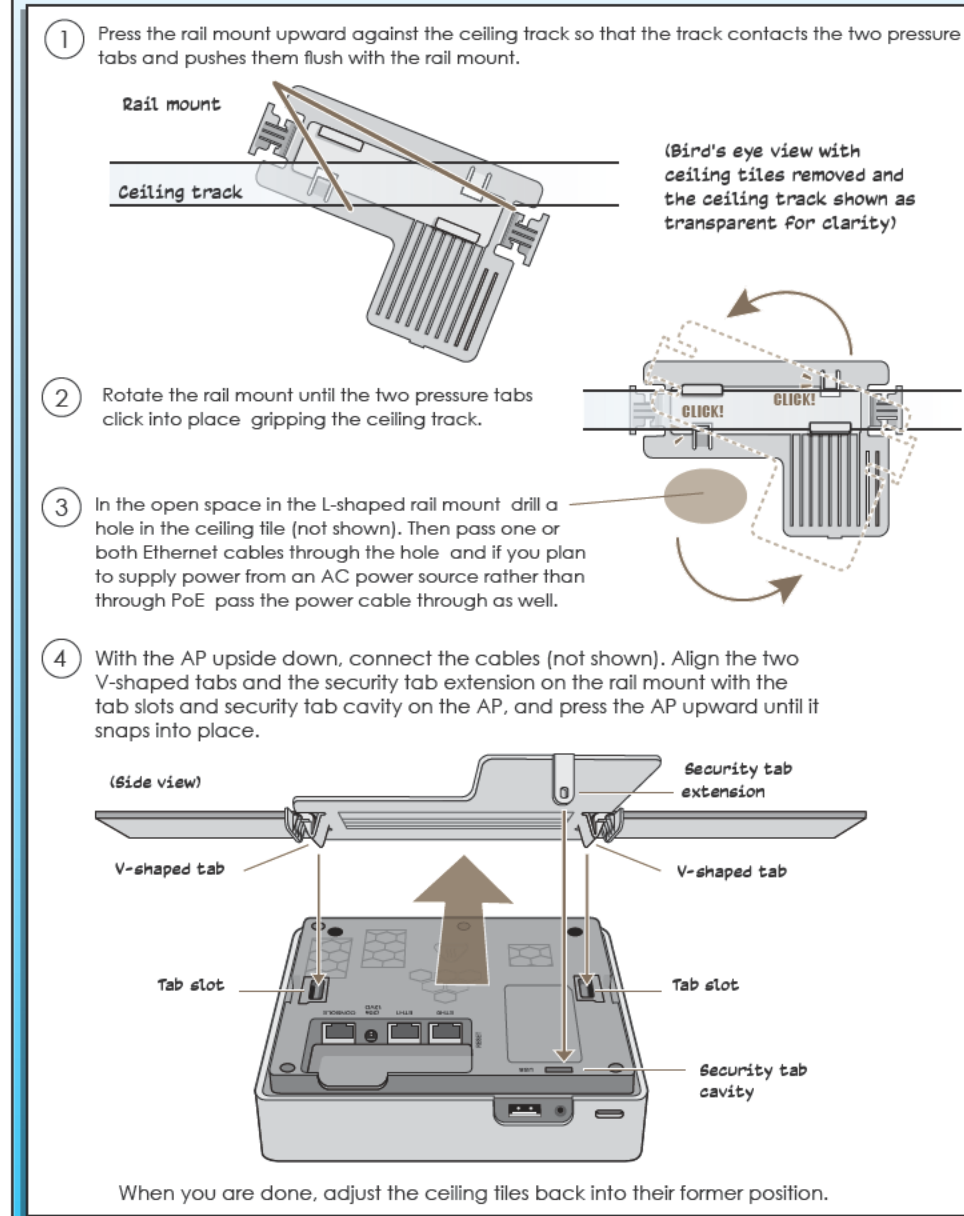
**Note:** You can install the AP on a table using the adhesive rubber feet that ship with the unit.

## Ceiling Mount

To mount the AP330 or AP350 to a standard 15/16" track (2.38 cm) in a dropped ceiling, use the rail mount that shipped with the AP. You also need a drill and—most likely—a ladder.

**Note:** Aerohive also offers a rail mount kit for 9/16" (1.34 cm) -wide, and 15/16" (2.38 cm) -wide recessed tracks for AP330, AP350, AP121, and AP141 models (AH-ACC-9-16-CLIP-330-350, and AH-ACC-BKT-REC-300-100, respectively).

Nudge the ceiling tiles slightly away from the track to clear some space, and then attach the appropriate rail mount to the ceiling track. When you have the rail mount in the correct location, cut or drill a hole in the ceiling through which you can then pass the Ethernet and power cables.

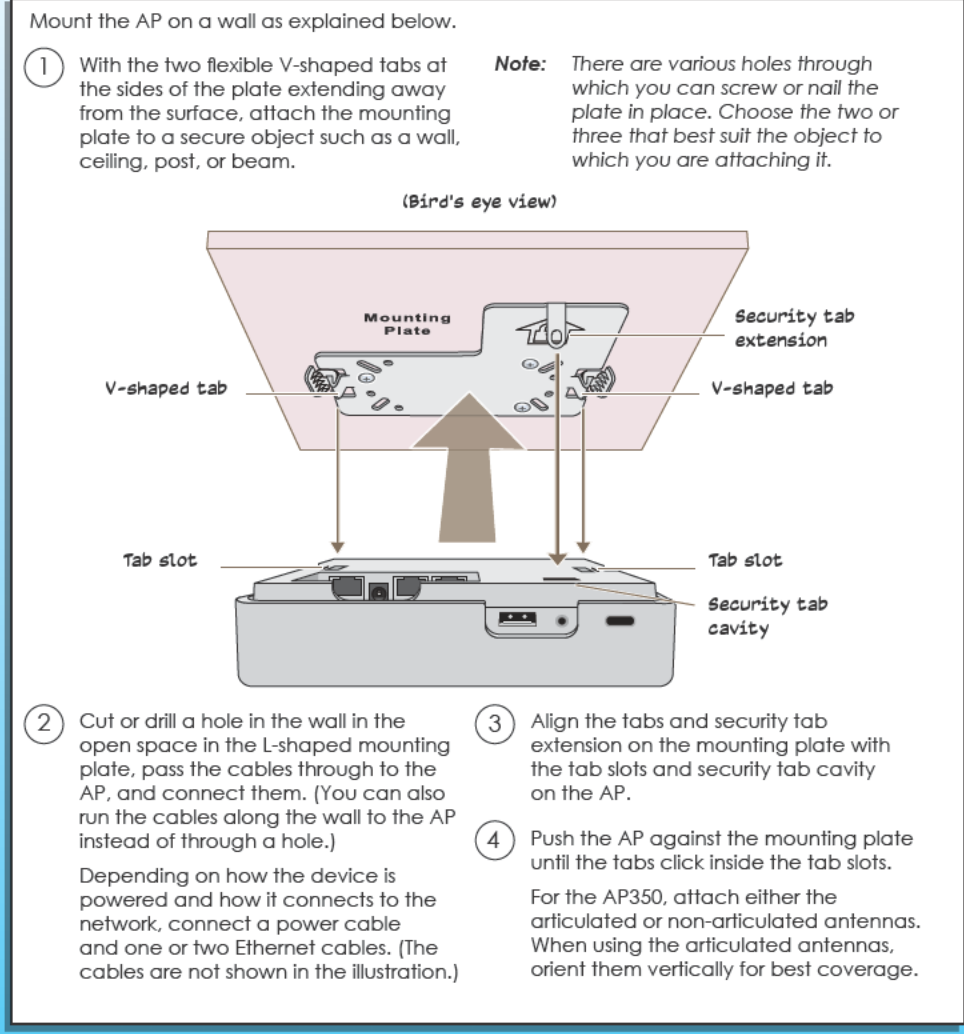


## AP350 Antenna Orientation

For AP350 devices, attach the articulated antennas and arrange them so that the center antenna is vertical, and the side antennas are slanted 45° away from the center antenna, as shown.

## Surface Mount

You can use the mounting plate to attach the AP to any surface that supports its weight, and to which you can screw or nail the plate. First, mount the plate to the surface. Then, in the open space in the L-shaped mounting plate, make a hole in the wall so that you can pass the cables through to the AP. Finally, attach the device to the plate, connect the cables, and for the AP350, attach the antennas.



## Locking the Device

To lock the AP to the rail mount or mounting plate, use either a Kensington lock or the security screw that is included with the mounting kit. To use a Kensington lock, loop the cable attached to the lock around a secure object, insert the T-bar component of the lock into the device lock slot on the HiveAP, and then turn the key to engage the lock mechanism.

To lock the AP to the rail mount or mounting plate or to lock the USB port cover, use the security screw, which is included in the mounting kit. You also need a drilled spanner insert bit for size #6 security screws and a screw driver that will accept the bit. The correct bits are available from Aerohive in sets of three (AH-ACC-SEC-BIT-330-350-3PK). To use the security screw, refer to the illustration below.

